



## X TREME 1656X



**X TREME 1656X** Model number: 35XTM16562XH18  
**2 beds • 2 baths • 896 sq.ft. • 16' width • 56' depth**

Our home building facilities invest in continuous product and process improvements. Plans, dimensions, features, materials, specifications and availability are subject to change without notice or obligation. Renderings and floor plans are representative likenesses of our homes and may differ from the actual homes. We invite you to tour a Home Center near you and inspect the highest value in quality housing available or call (903) 463-8499 to speak with a Home Consultant. Copyright 2017, CMH. All rights reserved.

<https://www.claytonhomesdenison.com>

**CLAYTON HOMES-  
DENISON**

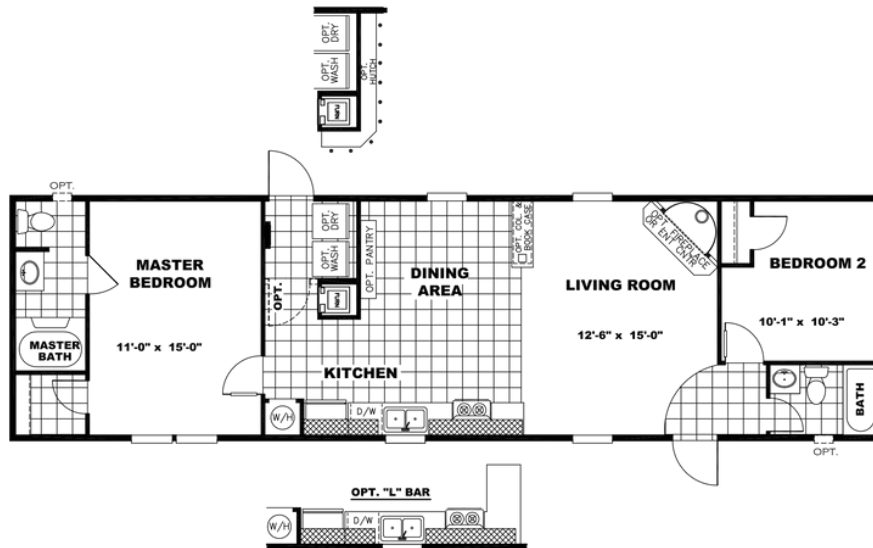
**5020 TEXOMA PKWY, BLDG C  
DENISON, TX 75020**

Monday - Thursday: 9am to 6pm  
Friday: 9am to 6pm  
Saturday: 9am to 5pm  
Sunday: Closed

(903) 463-8499



# X TREME 1656X



## X TREME 1656X Model number: 35XTM16562XH18

2 beds • 2 baths • 896 sq.ft. • 16' width • 56' depth

Our home building facilities invest in continuous product and process improvements. Plans, dimensions, features, materials, specifications and availability are subject to change without notice or obligation. Renderings and floor plans are representative likenesses of our homes and may differ from the actual homes. We invite you to tour a Home Center near you and inspect the highest value in quality housing available or call (903) 463-8499 to speak with a Home Consultant. Copyright 2017, CMH. All rights reserved.

<https://www.claytonhomesdenison.com>

### CLAYTON HOMES- DENISON

5020 TEXOMA PKWY, BLDG C  
DENISON, TX 75020

Monday - Thursday: 9am to 6pm  
Friday: 9am to 6pm  
Saturday: 9am to 5pm  
Sunday: Closed

(903) 463-8499